

# CERTIFICATE OF LOCATION OF GOVERNMENT CORNER

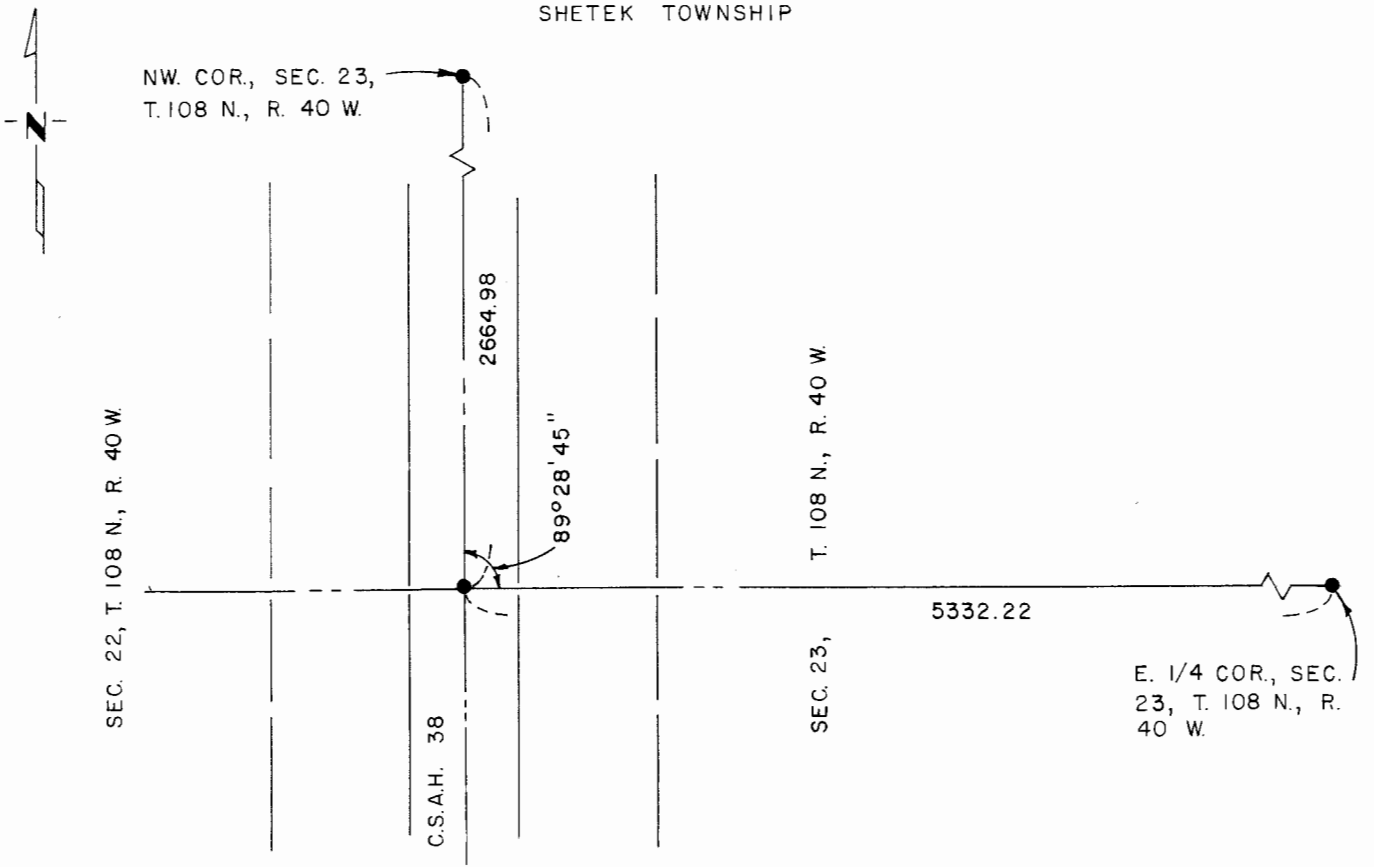
West Quarter Corner of Section 23, Township 108 N., Range 40 W., 5th P.M.

STATE OF MINNESOTA, County of Murray

At the corner location shown on the sketch:

- On 9 - 5 - 80 found an iron pin above stone per County records.  
DATE
- left monument as found,  lowered monument,  removed monument (explain)
- On \_\_\_\_\_ placed a \_\_\_\_\_  
DATE

SKETCH OF REFERENCE TIES  
SHETEK TOWNSHIP



I hereby certify that this document and the data contained herein was prepared by me or under my direct supervision.

*Way S. Stat* SIGNATURE      12/20/81 DATE

Registration No. 12967

- Land Surveyor,  Professional Engineer
- County Surveyor,  County Engineer

OFFICE OF THE COUNTY RECORDER  
County of Murray

I hereby certify that this document was filed in the Co. Recorders office at 10 A.M. on the 18th day of February A.D., 1982

County Recorder *Willard W. Ohme*

By \_\_\_\_\_, Deputy

DOCUMENT NO. \_\_\_\_\_